

Solar Powered Asset Tracker

(AT2215)

Remote Protection

For those situations where a reliable power supply is not available, yet you have valuable assets that need to be monitored, the Anytrek solar powered asset tracker is the answer. Designed to run for years even with only a few hours of sunlight per day, the advanced power management microprocessor extends battery life while still providing movement and motion awareness through advanced software that wakes the device should it sense movement.

Key Features

- **Simple and quick to install, start protecting assets immediately**

Self-install, either via screws or powerful magnets.

Tamper alerts automatically sent

- **Adjustable GPS Reporting Frequency**

Vary the frequency based on your needs

- **AnyFleet platform (Web, APP) to manage your assets**

Rich data source showing location, history, alerts

- **IP67 rated for toughness and durability**

Water, dust and heat proof. Operates from -4°F to 170°F

- **Failsafe Location Technology**

For weak GPS signal areas, the location is obtained from the CAT-M signal location

Features

- Future proof by utilizing the CAT-M cellular network. Seamless coverage across United States, Canada, and Mexico
- Long life Li internal battery can provide up to 6 months reporting without sunlight
- REST API for simple system integration
- Built in 3-axis G sensor for motion sensing
- High efficiency solar panel will continue to trickle charge battery in weak light conditions
- Over-The-Air (OTA) firmware upgrades to keep your device current



Anytrek



Solar-panel

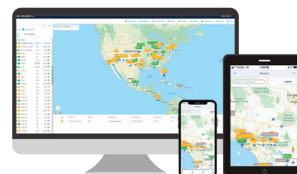


Magnetic



Anti-dismantle

Anytrek's asset tracker provides reliable asset tracking for fixed and movable assets such as trailers, containers/pods, generators, heavy-duty equipment, and more. The asset tracker is an ideal solution for managing unpowered assets that will be deployed for long periods outdoors or in other rugged environments. The tracker offers complete asset tracking and communications incorporating GPS technology on the CAT-M network for optimal performance. Superior internal antennas for both cellular and GPS eliminate the need for wired antennas and make the tracker mountable virtually anywhere on the asset for easy, inexpensive installations. With the asset tracker you can control operating costs, reduce theft and provide excellent field reliability.



AnyFleet platform
Track and Manage Your Assets
Anytime, Anywhere

AnyFleet Platform

Track and Manage Your Assets Anytime, Anywhere



Our free Web Portal has many Features to help you improve the efficiency of your Business.

Anytrek's AnyFleet web platform can be accessed for free with the purchase of any of our GPS tracking products. It provides the tools you need to monitor the location and status of your fleet and much more. Once you become an Anytrek customer, your tracking data is securely stored and accessible by you for as long as you remain a customer, we don't charge for storage and don't set an expiration period.

'API's for easy integration, already certified with:



Manage your Assets with Accurate Data



Instantly Check Your Yard Inventory



Locate Assets By Groups or Landmarks



Secure, quick and simple integration into 3rd party TMS systems



Comprehensive Maintenance Notifications



Informative Alerts Sent Via Phone & Email



Asset Utilization Report



Check the Dwell Time of Your Assets



Real-Time Tracking with Breadcrumb Trails



Landmarks & Geofencing



Real-Time Location



Head Office
4425 E Airport Dr, #100
Ontario, CA 91761

+1 (844) 872-6987
help@anytrek.com
anytrek.com